

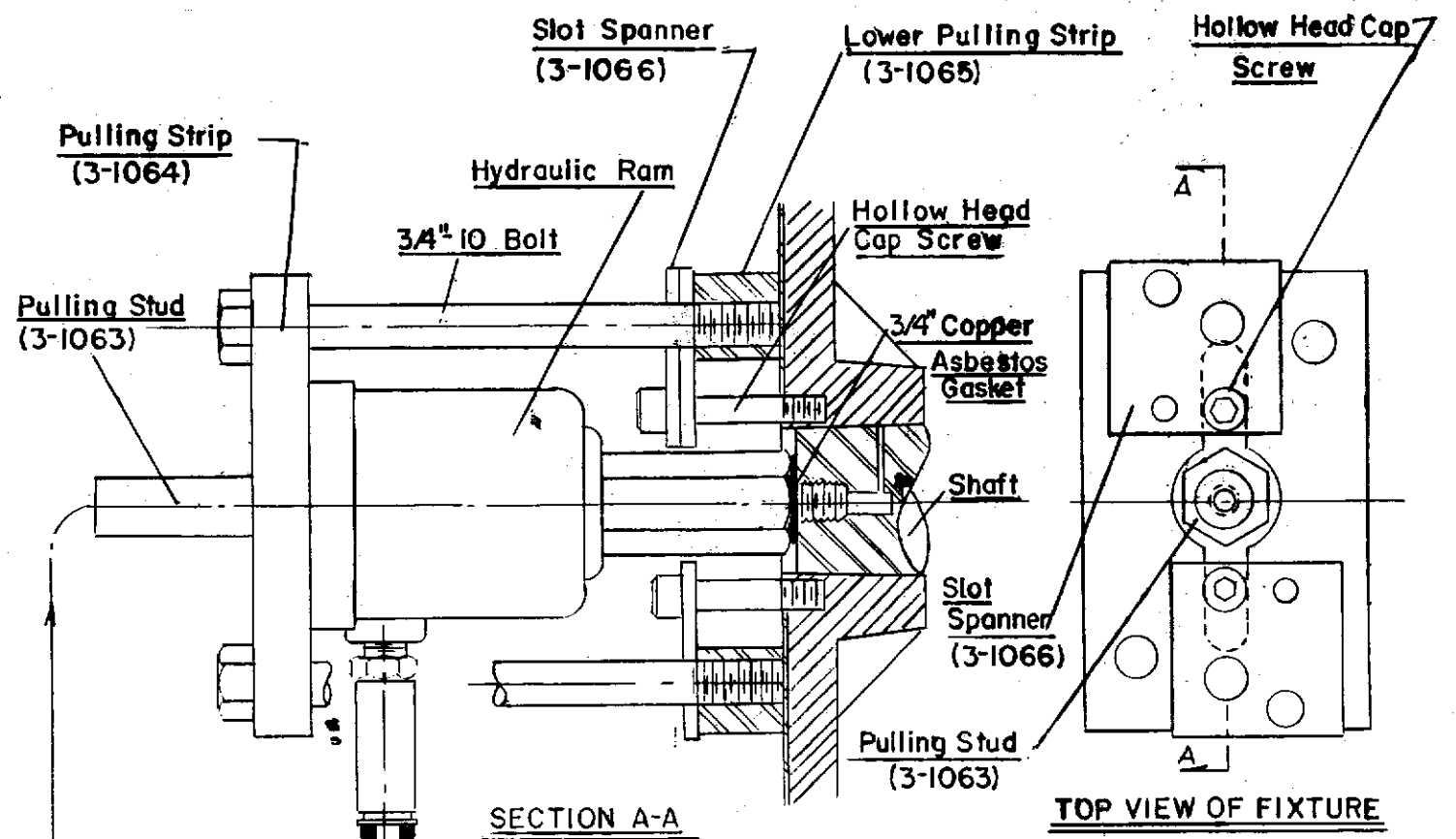
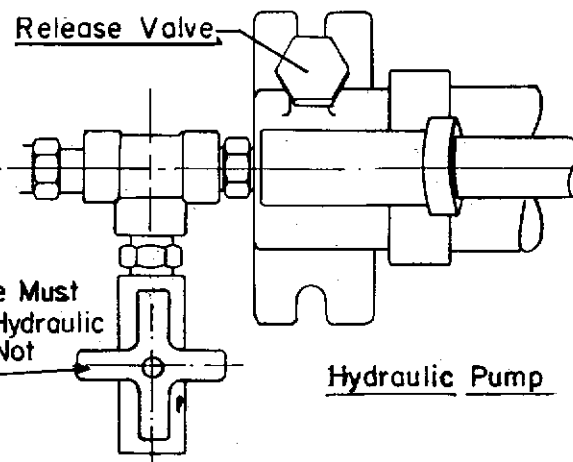
TOP VIEW OF FIXTURE

INSTRUCTIONS FOR REMOVAL OF CYLINDERS AND PULLEYS WITHOUT HYDRAULIC HUB EXPANSION FEATURE

1. Remove rust and corrosion from tapped holes in the spider or pulley by using the appropriate size taps provided. (See note below)
2. Mount lower pulling strip to face of pulley or spider by using one or two spanner strips as required to get maximum thread engagement and secure lower pulling strip firmly to cylinder.
3. Slip pulling stud through hydraulic ram. Put pulling strip over pulling stud and ram, and bolt with 3/4" bolts to lower pulling strip as shown in section A-A.
4. Run hydraulic line from ram to center outlet pump. Close yellow handle valve on side of pump to shut off extra hydraulic line.
5. Close release valve on pump. Remove cylinder or pulley by pumping pump. After cylinder or pulley is removed open release valve and depress ram manually to allow fluid to flow into pump unit.

NOTE: If holes in spider or pulley are corroded too badly or are stripped out drill holes out and tap to next larger size.
 Fill hydraulic pump with hydraulic oil before using and as necessary. Be sure system is not under pressure when filling.
 Use only hydraulic oil to refill pump. DO NOT use brake fluid.

NOTE: This Valve Must Be Closed When Hydraulic Hub Expansion Is Not Used.



TOP VIEW OF FIXTURE

SECTION A-A

INSTRUCTIONS FOR REMOVAL OF CYLINDERS AND PULLEYS WITH HYDRAULIC HUB EXPANSION FEATURE

1. Remove rust and corrosion from tapped holes in the spider by using the appropriate size taps provided. (See note below)
2. Screw the pulling stud into the tapped hole in the shaft. Use a new copper asbestos gasket between the pulling stud and the shaft to prevent oil from leaking past the threads in the shaft when pressure is applied.
3. Slip lower pulling strip over pulling stud and bolt to cylinder as shown in top view. Use one or two spanner strips as required to get maximum thread engagement and secure lower pulling strip to cylinder firmly.
4. Put hydraulic ram over pulling stud and attach upper pulling strip as shown in sectional view. Tighten the two long 3/4" bolts just enough to get maximum thread engagement into lower pulling strip. Do not over tighten.
5. Connect hydraulic lines to pump as shown.
6. Open yellow handle valve on pump to allow fluid to enter shaft and expand hub while ram pulls cylinder off shaft. Close release valve on pump. Remove cylinder by pumping pump. After cylinder is removed depress ram manually to allow fluid to go back into pump.

NOTE: If holes in cylinder are corroded too badly or are stripped out drill holes out and tap to the next larger size.
 Fill hydraulic pump with hydraulic oil before using and as necessary. Be sure system is not under pressure when filling.
 Use only hydraulic oil to refill pump. DO NOT use brake fluid.

NOTE: This Valve Must Be Open When Hydraulic Hub Expansion Is Used

